

DDS 5900 Digital Discussion System Specifications <small>(Note: All specifications are subject to change.)</small>	
<b>DDS 5900</b> System	<b>DC 5980 P</b> Discussion Unit
SYSTEM AUDIO PERFORMANCE	ANALOG SECTION
Audio quality	24 bit audio @ 32 kHz sampling
Audio frequency response	65 Hz – 16 kHz (-3 dB)
Total harmonic distortion at 1 kHz	< 0.1%
Dynamic range	> 80 dB
Weighted signal-to-noise ratio	> 85 dB(A)
CABLING AND SYSTEM LIMITS	GENERAL
Cable type (min. specification)	Cat5e, AWG 24, screened
Maximum cable length in one chain	120 m
SYSTEM ENVIRONMENTAL CONDITIONS	Power requirement
Working condition	Fixed, stationary or transportable
TEMPERATURE RANGE	Power consumption (Power supplied from CU 5905 / EX 6010 / PS 6000)
To guarantee specified performance	5° C – 40° C
Storage temperature	-20° C – 60° C
Maximum relative humidity	< 80%
CU 5905 Central Unit	DC 5900 F Flush Mount
ANALOG SECTION	ELECTRICAL
Audio output signal type	Electronically balanced
Nominal output level	0 dBm at nominal input
Max. output level	4.9 V RMS ~ +16 dBm
Audio input signal type	Electronically balanced
Nominal input level (in 1 is switchable)	0 dBm or -10 dBm
Max. input level	+15 dBm (4.5 V RMS)
Analog Audio in	impedance 50 – 100 kΩ
CONNECTORS	CONNECTORS
Chain – Discussion units (DCS-LAN)	2 x RJ45
Max. number of Discussion Units*	Between 44 – 48 (DC 5980 P or DC 5900 F with LS 5900 F) Between 50 – 64 (DC 5900 F without LS 5900 F), depending on connected gooseneck microphone
Audio output	4 XLR3 male connectors
Audio input	2 XLR3 female connector
LAN (TCP/IP)	1 RJ45
EEM	1 contact closure input
GENERAL	DCS-LAN
Power consumption	Max. 150W/48V
Supply voltage for DC 5980 units	125 W / 48 V
Weight	2.8 kg
Dimensions (W x H x D)	427 (483) x 44.4 x 186 mm
SYSTEM PERFORMANCE	Headphone
Max. number of discussion units	250
Max. number of interpreter units	32
Max. number of languages	2
Max number of open microphones	8
* without additional power supplies	
PS CU External Power Supply for CU 5905	GM 5923/24 Gooseneck Microphones
Delivered power	Max. 150W
Input current	Max. 4A@115V AC or max.2A@230V
In-rush current	Max. 40A@115V or max. 20A@230V
Standby consumption	< 0.5 W
Main voltage	100 - 240 V, 50 - 60 Hz
Supply voltage for CU 5905	48V/3A
Efficiency	Typical 87%
Weight	935 g
Dimensions (W x H x D)	180 x 52 x 99 mm
Transducer type	Condenser
Polar pattern	Cardioid
Frequency response	30 Hz - 18 kHz
Sensitivity	-52 +/- 3dB (0 dB = 1 V/1 Pa, 1 kHz)
Maximum input sound level	110 dB SPL, 1 kHz at 3% THD
Signal-to-noise ratio	>60 dBA
Front/back ratio	>25 dB (1 kHz)
Dimension (GM 5923)	400 mm
Dimension (GM 5924)	500 mm
Microphone connector	XLR3 male

**SHURE**  
LEGENDARY  
PERFORMANCE™

Europe, Middle East, Africa:  
Shure Europe GmbH  
Jakob-Dieffenbacher-Str. 12  
75031 Eppingen, Germany

Phone: +49 (0) 7262 92490  
Fax: +49 (0) 7262 9249114  
Email: info@shure.de  
www.shure.eu

www.shure.eu

**SHURE**  
LEGENDARY  
PERFORMANCE™

DIS **DDS 5900**  
Digital Discussion System

ELEGANT, SIMPLE,  
INTUITIVE.



## DDS 5900 Digital Discussion System

# ELEGANT, SIMPLE, INTUITIVE.

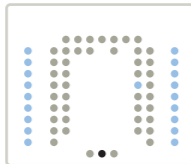
Combining high intelligibility with web-based control and configuration, the DDS 5900 Digital Discussion System is aimed at smaller discussion groups and conferencing situations. Offering plug-and-play simplicity as well as a variety of technical features, the cost-effective DDS 5900 is the perfect choice for conferencing purposes in local government offices and smaller boardrooms.

The DDS 5900 system has just two basic elements: the desktop or flush mount discussion unit, as used by participants in the discussion, and a rack mountable central 'brain', which can power up to 64 conference units and control up to 250.

Easy-to-use web browser-based control software allows the configuration of the main system parameters for simple, intuitive operation, including the main system volume, the maximum number of conference units, and the optional assignment of names to particular conference microphones. The browser software also displays the conference settings and microphone assignments graphically. Various operation modes – FIFO (first in, first out), VOX (voice activation), auto and manual – provide additional flexibility, and signals are encrypted.

The components of the DDS 5900 discussion system are quickly and simply connected in series via standard CAT5e cables. A TCP/IP connection allows for Ethernet connection for external control.

Discussion Unit DC 5980 P can be designated as Chairman, Delegate or Interpreter, and up to two interpreted languages may be carried on separate channels through the digital conference bus, each of which may be individually monitored via a headphone socket. Each unit can therefore be tailored to the individual requirements of a given conferencing situation without fuss.



Simplicity for all uses: DDS 5900 assures easy control for the president, delegates, and the interpreter.

## DDS 5900 Digital Discussion System Components



### WEB BROWSER - MICROPHONE CONTROL

- Microphone control on/off (speakers list, request list, last speakers list)
- System mode (select operation mode, mic parameters, loudspeaker control)

### WEB BROWSER – SYSTEM SET-UP

- CU configuration
- Delegate setup
- Seat assignment
- Name assignment to the seats
- Input/output control

### CU 5905 CENTRAL UNIT

- Fully digital technology
- Powers up to 60 conference units, controls 250 conference units
- Selectable operation modes (Auto, FiFo, VOX and manual)
- TCP/IP control for external control
- Encrypted sound
- 2 interpretation channels
- Analog emergency input
- 4 group outputs
- Cat5e (FTP and/or STP) cabling



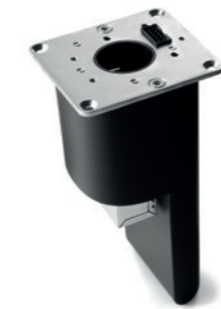
### DC 5980 P DISCUSSION UNIT

- Compact attractive tabletop design
- Soft touch button technology
- Configurable: chairman, delegate, interpreter
- Exchangeable button overlay
- Lockable xlr socket for the gooseneck
- High quality loudspeaker
- Stereo headphone socket
- 2 DCS LAN connectors
- 2 Interpreter channels

### GM 5923/24 GOOSENECK MICROPHONE

- 50 cm gooseneck microphone
- 40 cm gooseneck microphone

## DC 5900 F Flush Mount Components



### DC 5900 F BASE UNIT

- Small form factor base unit
- OUT-OF-THE-BOX setup and operation
- Works with both GM and MX microphones
- Easy to install



### FP 5921 F FRONT PLATE

- Front plate with SPEAK functionality
- Once the appropriate overlay is affixed to the discussion unit, the required functionality will be programmed/enabled automatically



### FP 5981 F FRONT PLATE

- Front plate with SPEAK, HEADPHONE VOLUME CONTROL and CHANNEL SELECTION functionality
- Once the appropriate overlay is affixed to the discussion unit, the required functionality will be programmed/enabled automatically

### BUTTON OVERLAYS

Overlays need to be affixed to the front plates in order to enable specific functionalities. For front plate FP 5921 F there are 4 different overlay designs available; for front plate FP 5981 F there are 3 different overlay designs available.



### FP 5921 F OL1

Delegate with SPEAK and MUTE functionality



### FP 5921 F OL2

Delegate with SPEAK functionality



### FP 5921 F OL3

Chairman with SPEAK and DELEGATES OFF functionality



### FP 5921 F OL4

Delegate without any buttons (remote activation)



### FP 5981 F OL5

Delegate with SPEAK, MUTE, HEADPHONE VOLUME CONTROL and CHANNEL SELECTION functionality



### FP 5981 F OL6

Delegate with SPEAK, HEADPHONE VOLUME CONTROL and CHANNEL SELECTION functionality



### FP 5981 F OL7

Chairman with SPEAK, DELEGATES OFF, HEADPHONE VOLUME CONTROL and CHANNEL SELECTION functionality

### MICROPHONES & SPEAKERS



### MX405/410/415 GOOSENECK MICROPHONE

- Interchangeable cardioid, supercardioid and omnidirectional condenser cartridges
- 'R' versions with the light ring at the top are recommended
- Available cartridges R183 (omnidirectional), R184 (supercardioid) and R185 (cardioid)



### LS 5900 F SPEAKER MODULE

Loudspeaker module (optional) to connect to DC 5900 F base unit



### AC 5901 ADAPTOR

- AC 5901 is needed to connect Shure Microflex microphones MX 405, MX410 or MX415 to DC 5900 F flush mount unit

### CONFIGURATION EXAMPLES



### 1 FP 5921 DELEGATE WITH MX MICROPHONE

- DC 5900 F Base Unit
- FP 5921 F Front Plate
- FP 5921 OL1 Overlay
- AC 5901 Adapter
- MX405 Microphone and R185 cartridge

### 2 FP 5981 CHAIRMAN WITH MX MICROPHONE

- DC 5900 F Base Unit
- FP 5981 F Front Plate
- FP 5981 OL7 Overlay
- AC 5901 Adapter
- MX405 Microphone and R185 cartridge

### 3 FP 5981 DELEGATE WITH GM MICROPHONE

- DC 5900 F Base Unit
- FP 5981 F Front Plate
- FP 5981 OL5 Overlay
- GM 5923 Microphone
- LS 5900 F Speaker